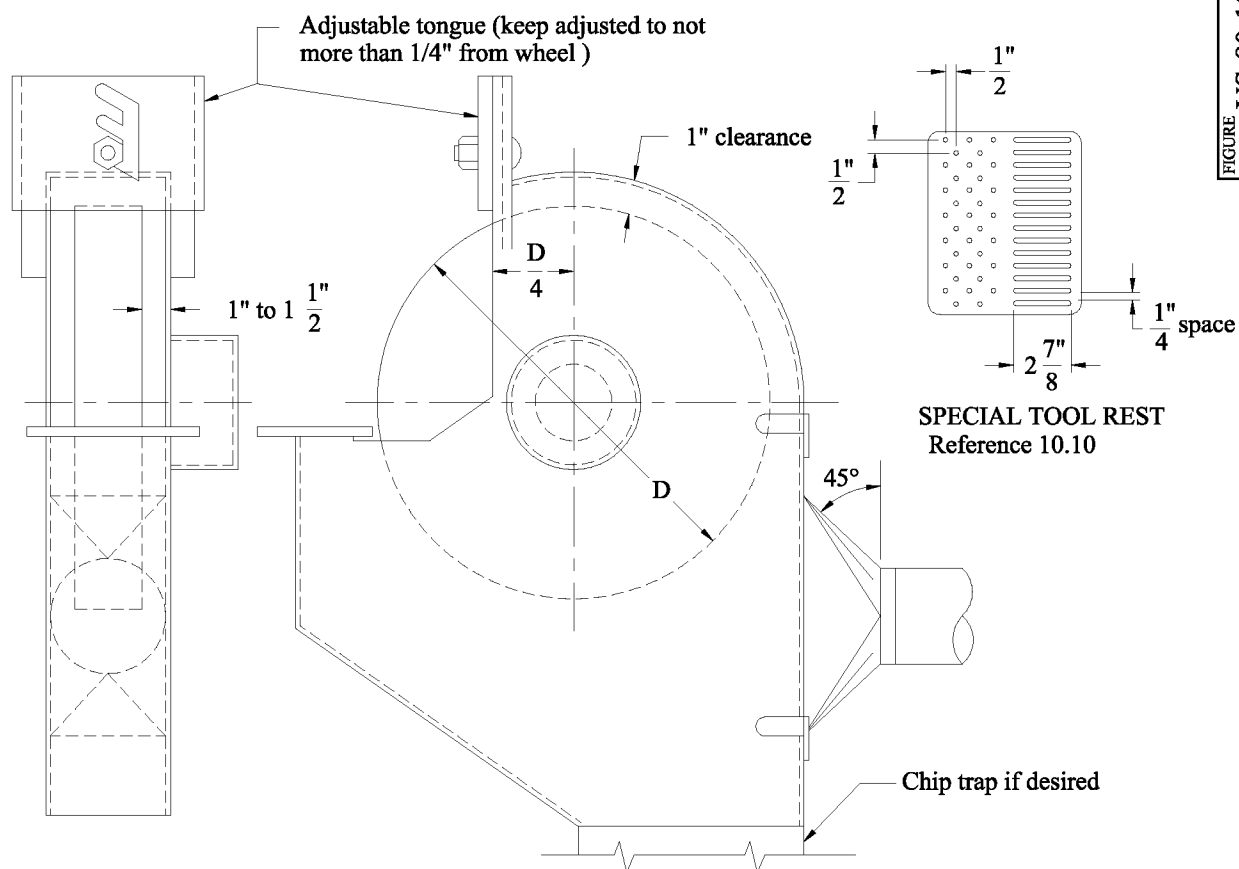


FIGURE VS-80-10



EXHAUST FLOW RATES, cfm

Wheel dia. inches	Wheel width inches	Good enclosure*	Poor enclosure
Up to 5	1	220	390
5 to 10	1.5	390	610
10 to 14	2	500	740
14 to 16	2	610	880
16 to 20	3	740	1000
20 to 24	4	880	1200
24 to 30	5	1200	1600
30 to 36	6	1600	2000

*Special hood and tool rest as shown, no more than 25% of the wheel exposed.

Minimum duct velocity = 4000 fpm

$h_e = 0.65 VP_d$ for straight take-off

$h_e = 0.40 VP_d$ for tapered take-off



TITLE

GRINDING WHEEL HOOD
SURFACE SPEEDS
ABOVE 6500 sfpm

FIGURE

VS-80-10

DATE

02-91

AMERICAN CONFERENCE OF GOVERNMENTAL INDUSTRIAL HYGIENISTS